

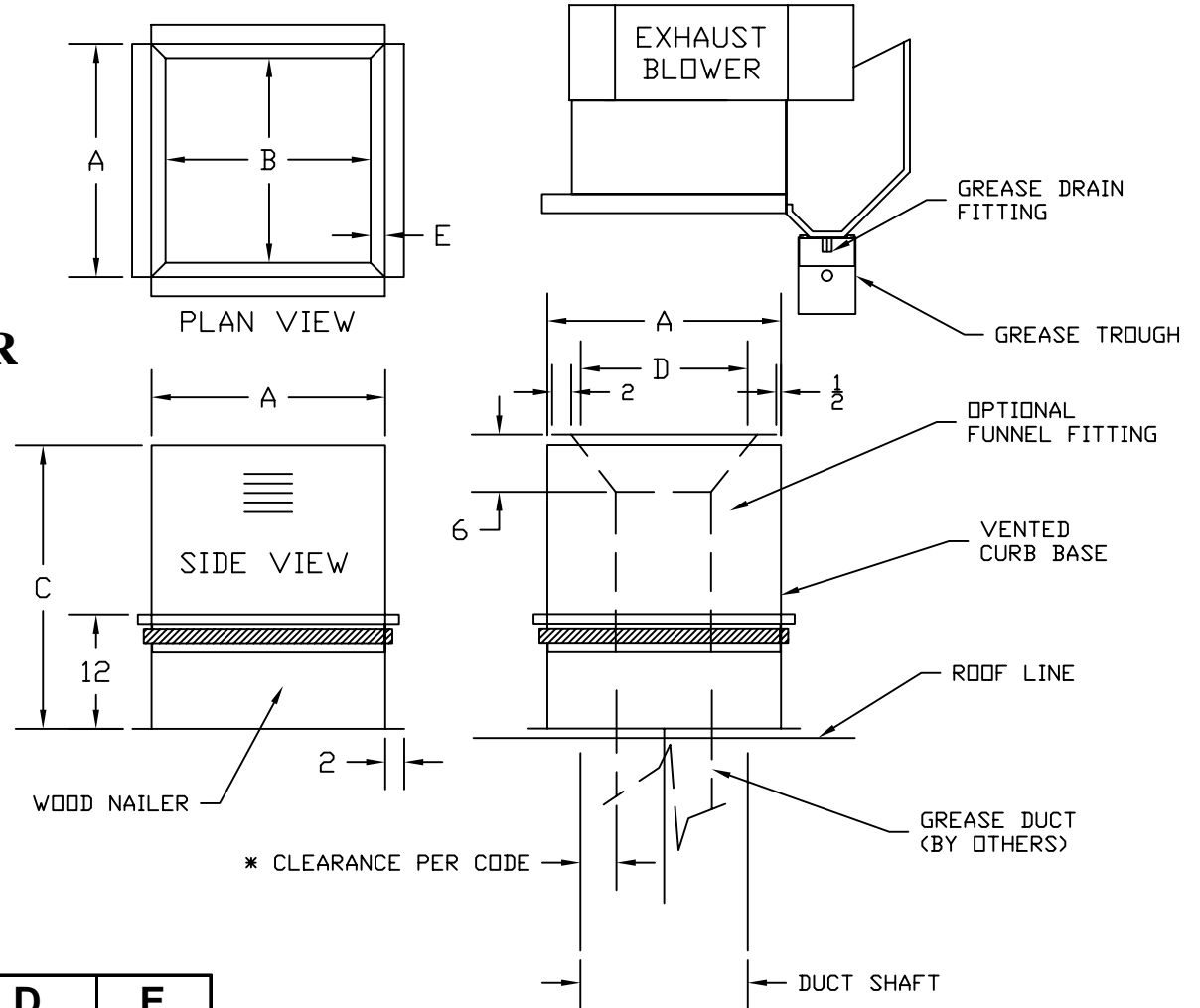


CENTRAL BLOWER CO.

211 S. 7TH AVE.
 CITY OF INDUSTRY, CA 91746
 (626) 330-3182 FAX (626) 330-9406
 www.centralblower.com

**RE - RESTAURANT EXHAUSTER
 CURB DETAIL**

OPTIONAL FUNNEL FITTING &
 SIDE INLET FITTING AVAILABLE
 CONTACT FACTORY FOR DETAILS



MODEL	A	B	C	D	E
RE 12	24 1/2	21 1/2	29 3/4	17 1/2	1 1/2
RE 15	24 1/2	21 1/2	29 3/4	17 1/2	1 1/2
RE 18	39 7/8	36 7/8	26	33	1 1/2
RE 22	39 7/8	36 7/8	26	33	1 1/2
RE 24	47	43	21	40	2

INSTALLATION PROCEDURE

1. LOOSEN HINGE BOLT SECURING BLOWER TO BASE, SET BASE ON ROOF.
2. DROP GREASE DUCT ON BASE THROUGH OPENING IN BASE. FLANGE ON DUCT WILL SET ON LIP OF BASE TO HOLD DUCT IN PLACE
3. SET BLOWER ON BASE AND TIGHTEN BOLTS THAT SECURE HINGES TO BASE.